



Webbs
Helping people move since 1994

Baneberry Drive | Featherstone, Wolverhampton | WV10 7TR
Offers In The Region Of £250,000

 **Webbs**
estate agents

Summary

**** MODERN DETACHED HOME ** SHOW HOME STANDARD ** TWO BEDROOMS ** REFITTED KITCHEN DINER AND BATHROOM ** GENEROUS PLOT ** EXCELLENT TRANSPORT LINKS AND SCHOOL CATCHMENTS ** AMPLE OFF ROAD PARKING ** VIEWING STRONGLY ADVISED ****

Webbs Estate Agents are pleased to offer for sale an extremely well-presented and improved detached home, offering excellent schools, transport links and local shops and amenities.

In brief consisting of an entrance, spacious lounge, stunning refitted kitchen diner leading into the conservatory offering an additional reception room which overlooks the garden.

To the first floor there are two generous bedrooms and a refitted modern bathroom, externally this property offers a great space to extend at the side (subject to planning), an enclosed rear garden with patio seating area and lawn, double-gated side access, a good-sized driveway and a front garden.

EARLY VIEWING ADVISED TO FULLY APPRECIATE THE PROPERTY ON OFFER

Key Features

- MODERN DETACHED HOME
- GENEROUS PLOT IDEAL FOR EXTENSION (SUBJECT TO PLANNING)
- REFITTED MODERN FAMILY BATHROOM
- ENCLOSED REAR GARDEN
- CONSERVATORY
- TWO GENEROUS BEDROOMS
- AMPLE OFF ROAD PARKING
- STUNNING REFITTED KITCHEN DINER
- EXCELLENT SCHOOLS AND TRANSPORT LINKS
- VIEWING ESSENTIAL TO APPRECIATE THE PROPERTY ON OFFER

Rooms and Dimensions

ENTRANCE

LOUNGE

13'5" x 10'5" (4.11 x 3.20)

REFITTED MODERN KITCHEN DINER

13'6" x 7'10" (4.14 x 2.41)

CONSERVATORY

13'1" x 9'6" (4.01 x 2.90)

LANDING

BEDROOM ONE

13'8" x 12'4" (4.17 x 3.76)

BEDROOM TWO

9'1" x 7'4" (2.77 x 2.24)

REFITTED MODERN BATHROOM

ENCLOSED REAR GARDEN

FRONT GARDEN AND DRIVEWAY

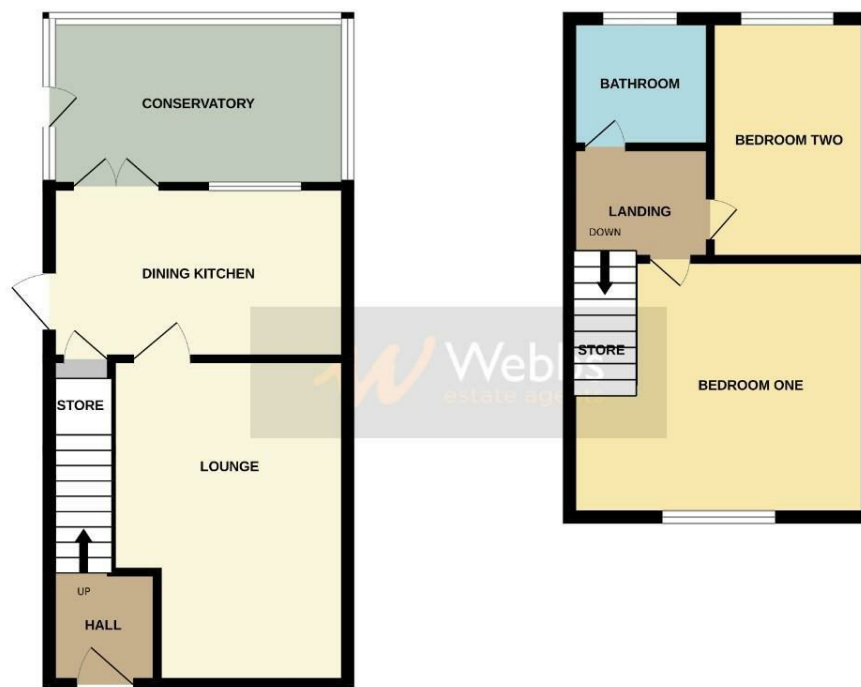
IDENTIFICATION CHECKS - C





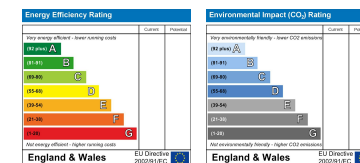
GROUND FLOOR

1ST FLOOR



Whilst every attempt has been made to ensure the accuracy of the floorplan contained here, measurements of doors, windows, rooms and any other items are approximate and no responsibility is taken for any error, omission or mis-statement. This plan is for illustrative purposes only and should be used as such by any prospective purchaser. The services, systems and appliances shown have not been tested and no guarantee as to their operability or efficiency can be given.
Made with Metropix ©2025

Webbs Estate Agents - endeavour to maintain accurate depictions of properties in Virtual Tours, Floor Plans and descriptions, however, these are intended only as a guide and purchasers must satisfy themselves by personal inspection.



153 Avon Road, Cannock, WS11 1LF

Tel: 01543 468846 | Email: sales@webbestateagents.co.uk | www.webbestateagents.co.uk

Webbs
estate agents